

# Fabrex<sup>®</sup>

Furnishings by EXCEL



linen library



# linen library

The Linen Library is a curated series of matte, richly textured fabrics designed to elevate spaces with understated luxury and tactile sophistication. This series is rooted in a dry, natural look and feel, offering a harmonious selection of fabrics that seamlessly coordinate across four distinct collections: Drapes, Sheers, Upholstery, and Embroideries. Each collection is thoughtfully designed to work beautifully together, allowing an entire interior space to be styled cohesively using this library. Inspired by the elegance of Scandinavian design, the series focuses on texture, tone, and simplicity. The neutral palette—featuring refined hues like Oat, Sand, Stone, Cloud, and Mushroom—forms the foundation for this calm, sophisticated aesthetic. The fabrics carry a dry matte finish with an organic tactility, inviting touch and creating visual depth without shine. Whether you're looking to layer airy sheers, ground a space with textural drapery, add comfort through plush upholstery, or elevate the setting with tonal embroidery, the Linen Library offers a complete and flexible furnishing solution.

The Linen Library Embroidery collection brings a layer of refined artistry to the series through intricate, tonal embellishments on matte-textured bases. The designs include a richly detailed all-over geometric embroidery done in cord, an abstract linear floral that adds movement and softness, and a bold abstract geometric motif crafted using bouclé yarn for a sculptural effect. The collection also features an elegant paisley design stitched in kantha style, a botanical leaf pattern brought to life through fine cord embroidery, and a minimalist geometric outline embroidered with bouclé for subtle depth. These ornamental fabrics are perfect for accents such as roman blinds, drapes, and cushions, offering a luxurious textural complement to the simpler woven textiles in the series. With their tonal threadwork and neutral base fabrics, the embroideries are designed to enhance without overwhelming, completing the Linen Library story with depth, detail, and timeless sophistication.

Fabrex®  
Furnishings by EXCEL



# index

04

## fabric shot

to view the fabric real look in large view

10

## fabric layers

to view the fabric as per the catalog layering

18


## fabric shade chart & technicals

to view the fabric in available shades with the technical specifications



KAIRO | SAND | LLE-008

04


 Click on fabric to view the product shades & technicals.

[◀ go to index](#)

★ The e-catalogue should be used for reference purpose only. Swatches colour may vary in physical.



CAMEO | SAND | LLE-009  
05


 Click on fabric to view the product shades & technicals.

[◀ go to index](#)

★ The e-catalogue should be used for reference purpose only. Swatches colour may vary in physical.



CURVANE | SAND | LLE-010  
06


 Click on fabric to view the product shades & technicals.

[◀ go to index](#)

★ The e-catalogue should be used for reference purpose only. Swatches colour may vary in physical.



FERNISH | SAND | LLE-011  
07


 Click on fabric to view the product shades & technicals.

[◀ go to index](#)

★ The e-catalogue should be used for reference purpose only. Swatches colour may vary in physical.



FRONDAL | SAND | LLE-012  
08


 Click on fabric to view the product shades & technicals.

[◀ go to index](#)

★ The e-catalogue should be used for reference purpose only. Swatches colour may vary in physical.




FOLK | SAND | LLE-013  
09

 Click on fabric to view the product shades & technicals.

[◀ go to index](#)

★ The e-catalogue should be used for reference purpose only. Swatches colour may vary in physical.



 Click on fabric to view the product shades & technicals.

[◀ go to index](#)



LLE - 005




LLE - 006



LLE - 007



LLE - 011

 Click on fabric to view the product shades & technicals.

[◀ go to index](#)



LLE - 012



LLE - 008



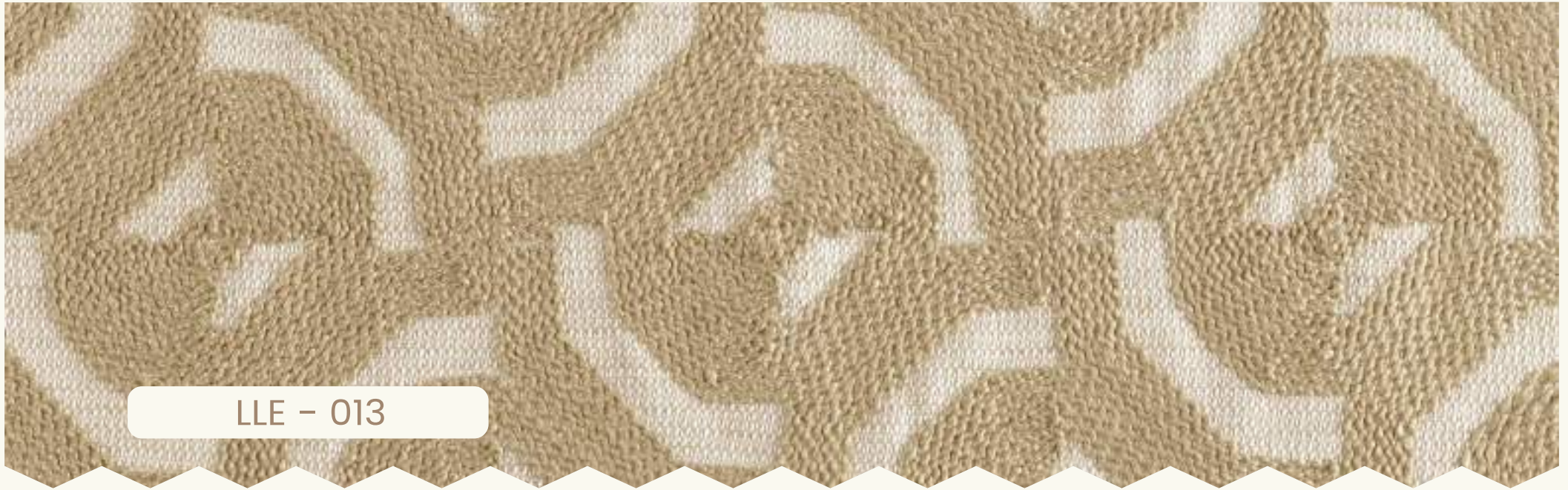
LLE - 009



LLE - 010

 Click on fabric to view the product shades & technicals.


[◀ go to index](#)



 Click on fabric to view the product shades & technicals.

[◀ go to index](#)



 Click on fabric to view the product shades & technicals.

[◀ go to index](#)



LLE - 021



LLE - 023



LLE - 025



LLE - 022

 Click on fabric to view the product shades & technicals.

[◀ go to index](#)



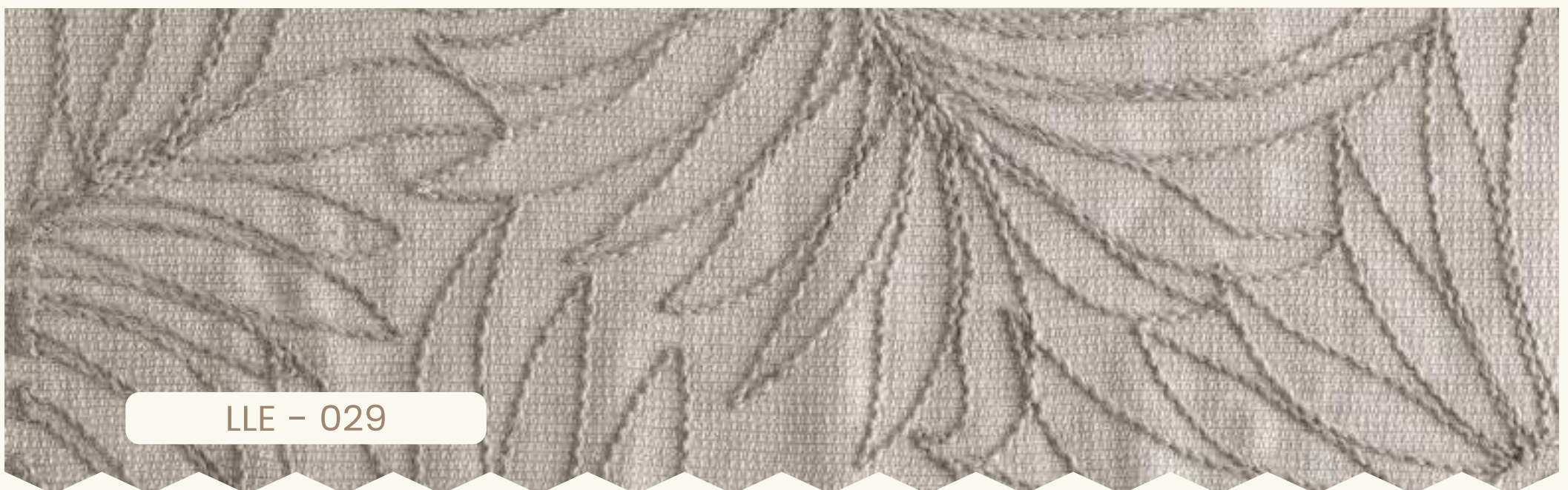
LLE - 024



LLE - 026



LLE - 027



LLE - 029

 Click on fabric to view the product shades & technicals.

[◀ go to index](#)



 Click on fabric to view the product shades & technicals.

[◀ go to index](#)

## kairo - shade chart



OAT | LLE- 001



SAND | LLE-008



STONE | LLE-014



MUSHROOM | LLE-020



PEBBLE | LLE-026

Width (cm): 140 cms  
GSM: 332  
Martindale: N/A

Composition: 87% polly. 13% cott.  
H Repeat: 22.86 cms  
V Repeat: 24.13 cms

Wash Care:   
End Use: 

## cameo - shade chart



OAT | LLE- 002



SAND | LLE-009



STONE | LLE-015



MUSHROOM | LLE-021



PEBBLE | LLE-027

Width (cm): 140 cms  
GSM: 366  
Martindale: N/A

Composition: 88% polly. 12% cott.  
H Repeat: 45.72 cms  
V Repeat: 48.26 cms

Wash Care:   
End Use: 



## curvane - shade chart



OAT | LLE- 003



SAND | LLE-010



STONE | LLE-016



MUSHROOM | LLE-022



PEBBLE | LLE-028

Width (cm): 140 cms  
GSM: 332  
Martindale: N/A

Composition: 87% polly. 13% cott.  
H Repeat: 45.72 cms  
V Repeat: 48.26 cms

Wash Care:   
End Use: 

## fernish - shade chart



OAT | LLE- 004



MUD | LLE-005



SAND | LLE-011



STONE | LLE-017



MUSHROOM | LLE-023



PEBBLE | LLE-029

Width (cm): 140 cms  
GSM: 354  
Martindale: N/A

Composition: 88% polly. 12% cott.  
H Repeat: 45.72 cms  
V Repeat: 48.26 cms

Wash Care:   
End Use: 

## frondal - shade chart



OAT | LLE- 006



SAND | LLE-012



STONE | LLE-018



MUSHROOM | LLE-024



PEBBLE | LLE-030

Width (cm): 140 cms  
GSM: 269  
Martindale: N/A

Composition: 70% polly. 16% cott. 14% vis.  
H Repeat: 45.72 cms  
V Repeat: 48.26 cms

Wash Care:   
End Use: 

## folk - shade chart



OAT | LLE- 007



SAND | LLE-013



STONE | LLE-019



MUSHROOM | LLE-025



PEBBLE | LLE-031

Width (cm): 140 cms  
GSM: 479  
Martindale: N/A

Composition: 91% polly. 09% cott.  
H Repeat: 45.72 cms  
V Repeat: 48.26 cms

Wash Care:   
End Use: 



Fabrex®  
Furnishings by EXCEL



# linen library



[www.excelwallpapers.com](http://www.excelwallpapers.com)