

Fabrex[®]

Furnishings by EXCEL



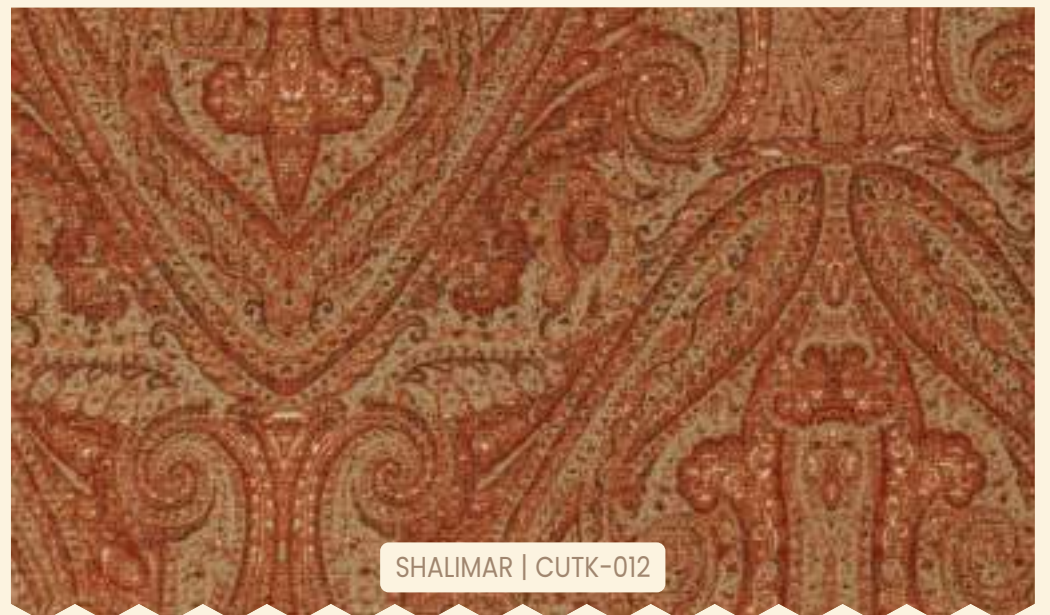
threads of kashmir



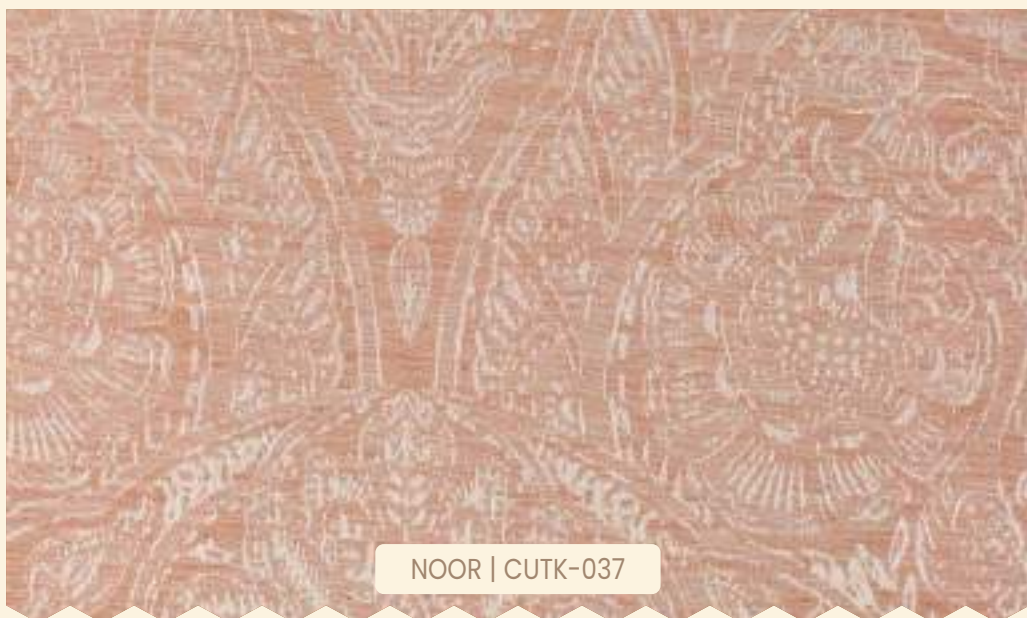
threads of kashmir

This collection celebrates the intricate artistry and rich cultural heritage of Kashmiri craftsmanship. Inspired by the timeless beauty of traditional Kashmiri shawls, this collection highlights the delicate, handwoven threads that create mesmerizing patterns and motifs. Each design reflects the region's mastery of embroidery, where fine stitches come together to form elegant paisleys, florals, and intricate filigree. This collection evokes the luxurious textures and ornate details of Kashmir's textile tradition, bringing warmth, refinement, and an artisanal touch to any space. With designs depicted in print, embroidery, and woven forms, The Threads of Kashmir invites you to experience the beauty of craftsmanship passed down through generations.

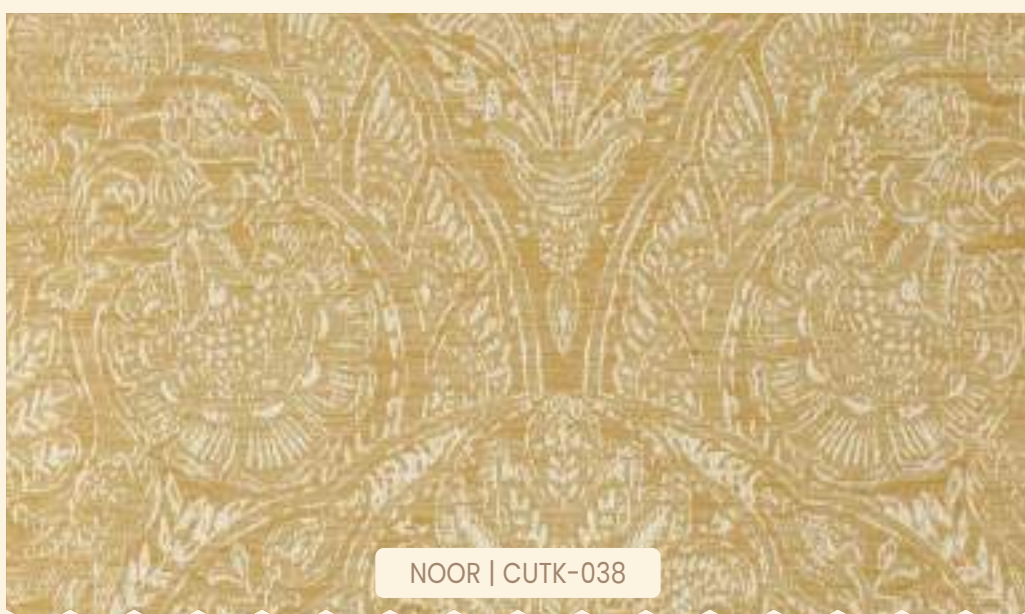
kesari palette



Gulabi palette



basant palette



sunehri palette



multani palette



pathar palette

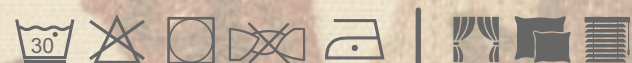


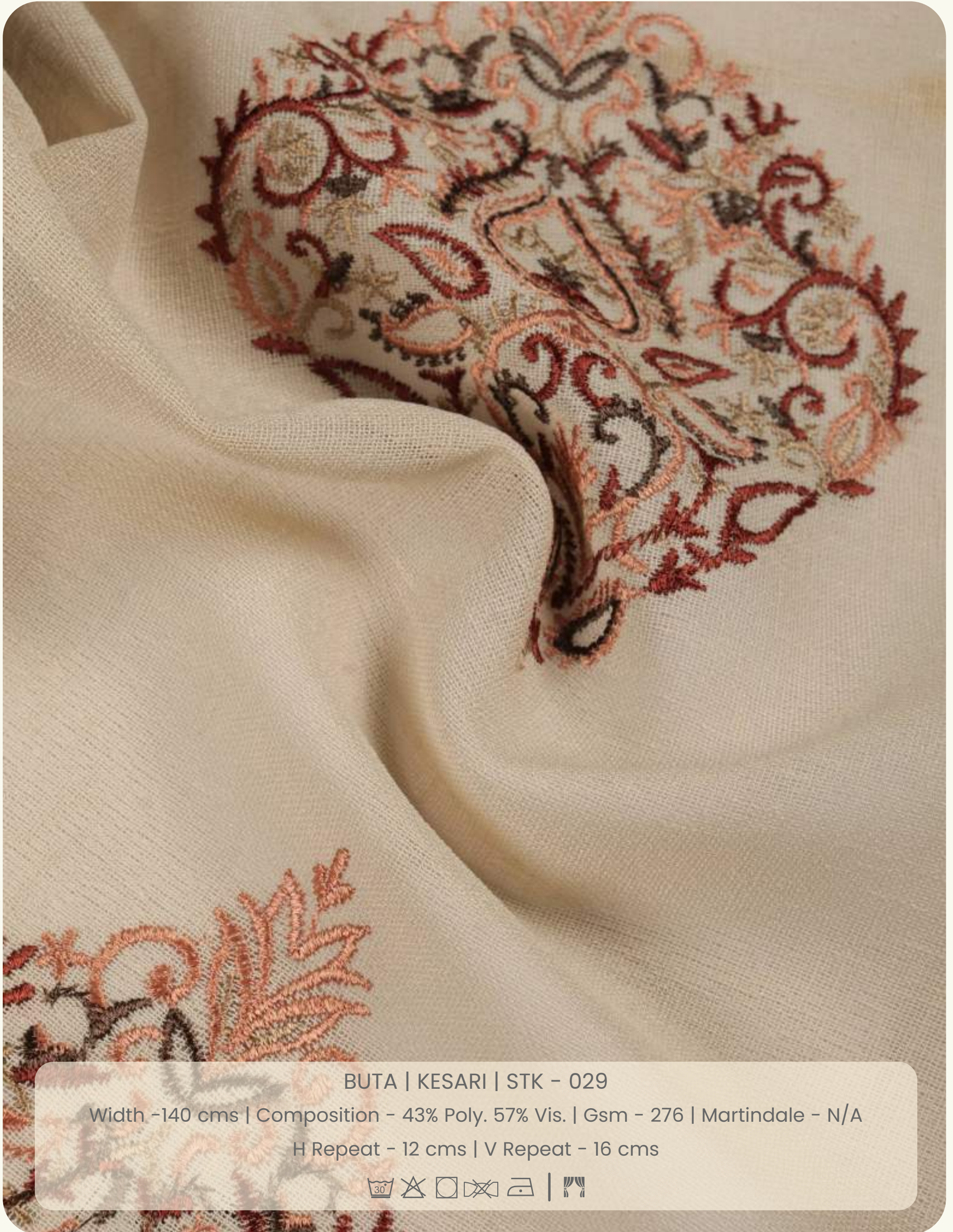


GULZAR | KESARI | CUTK - 023

Width -140 cms | Composition - 73% Poly. 20% Cott. 7% Lin | Gsm - 320

Martindale - N/A | H Repeat - 25 cms | V Repeat - 43 cms



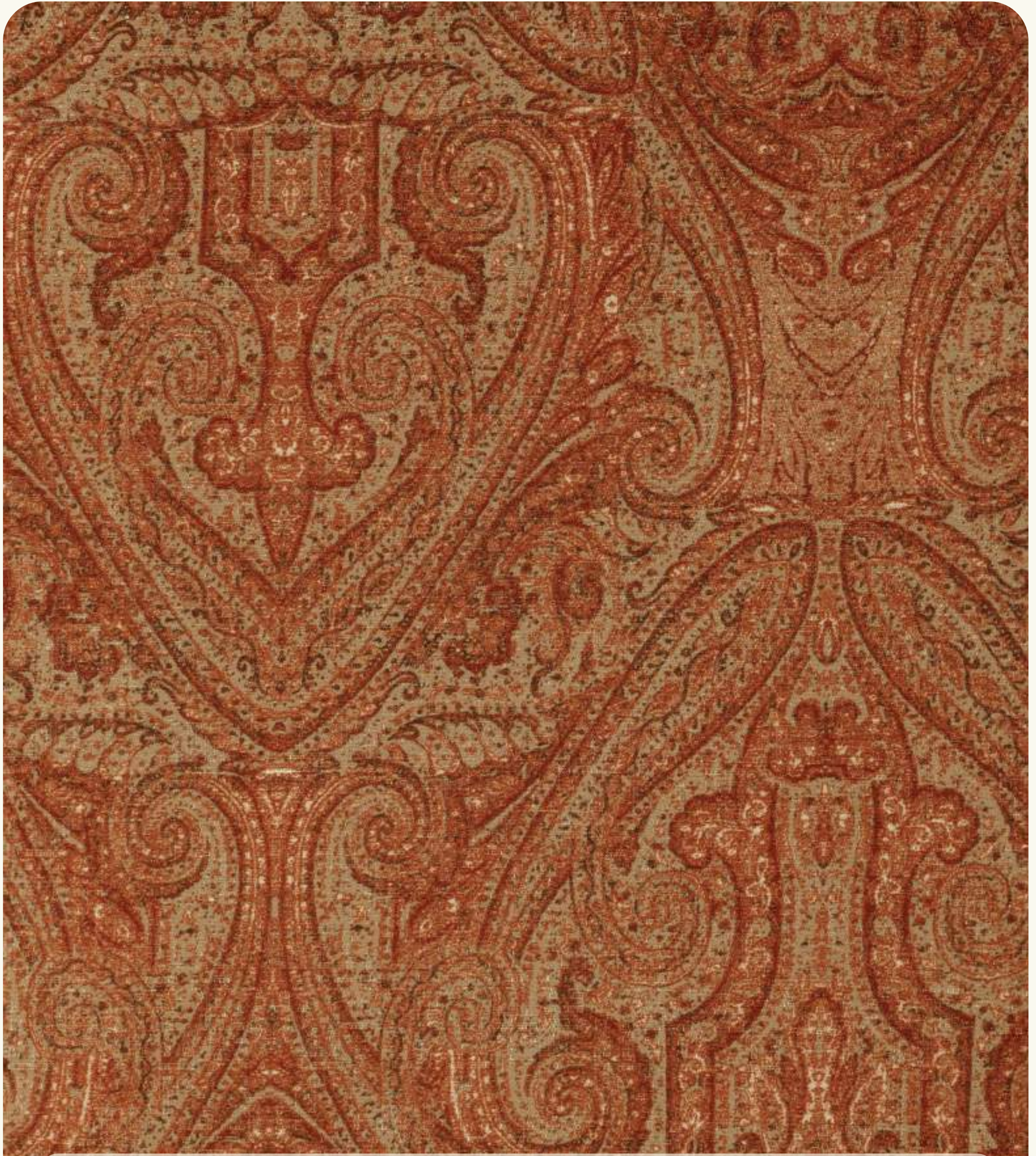


BUTA | KESARI | STK - 029

Width -140 cms | Composition - 43% Poly. 57% Vis. | Gsm - 276 | Martindale - N/A

H Repeat - 12 cms | V Repeat - 16 cms



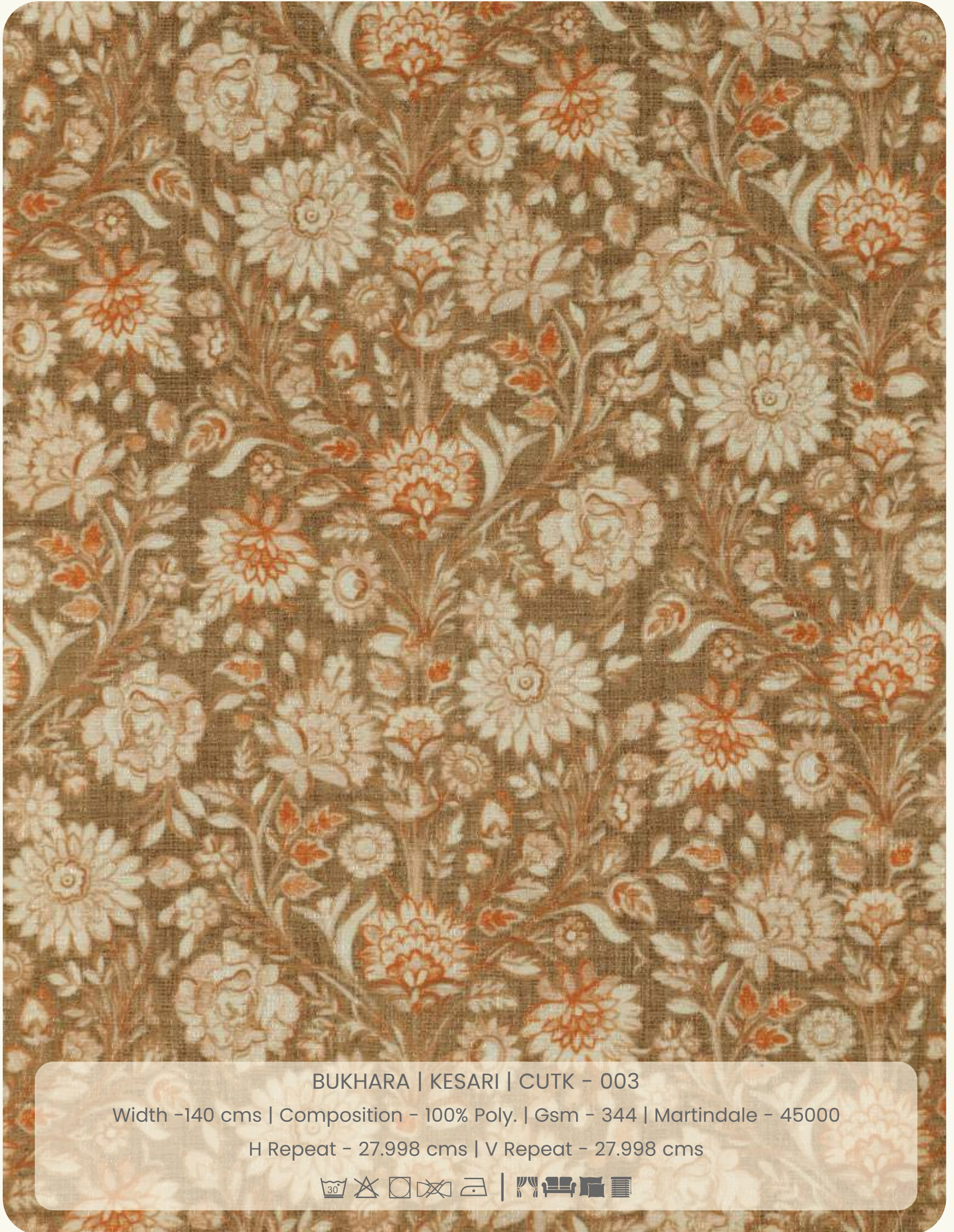


SHALIMAR | KESARI | CUTK - 012

Width -140 cms | Composition - 100% Poly. | Gsm - 344 | Martindale - 45000

H Repeat - 32.004 cms | V Repeat - 35.001 cms





BUKHARA | KESARI | CUTK - 003

Width -140 cms | Composition - 100% Poly. | Gsm - 344 | Martindale - 45000

H Repeat - 27.998 cms | V Repeat - 27.998 cms





GULISTAN | GULNAAR | UTK - 021

Width -140 cms | Composition - 100% Poly. | Gsm - 355 | Martindale - 45000

H Repeat - 46.584 cms | V Repeat - 46.584 cms



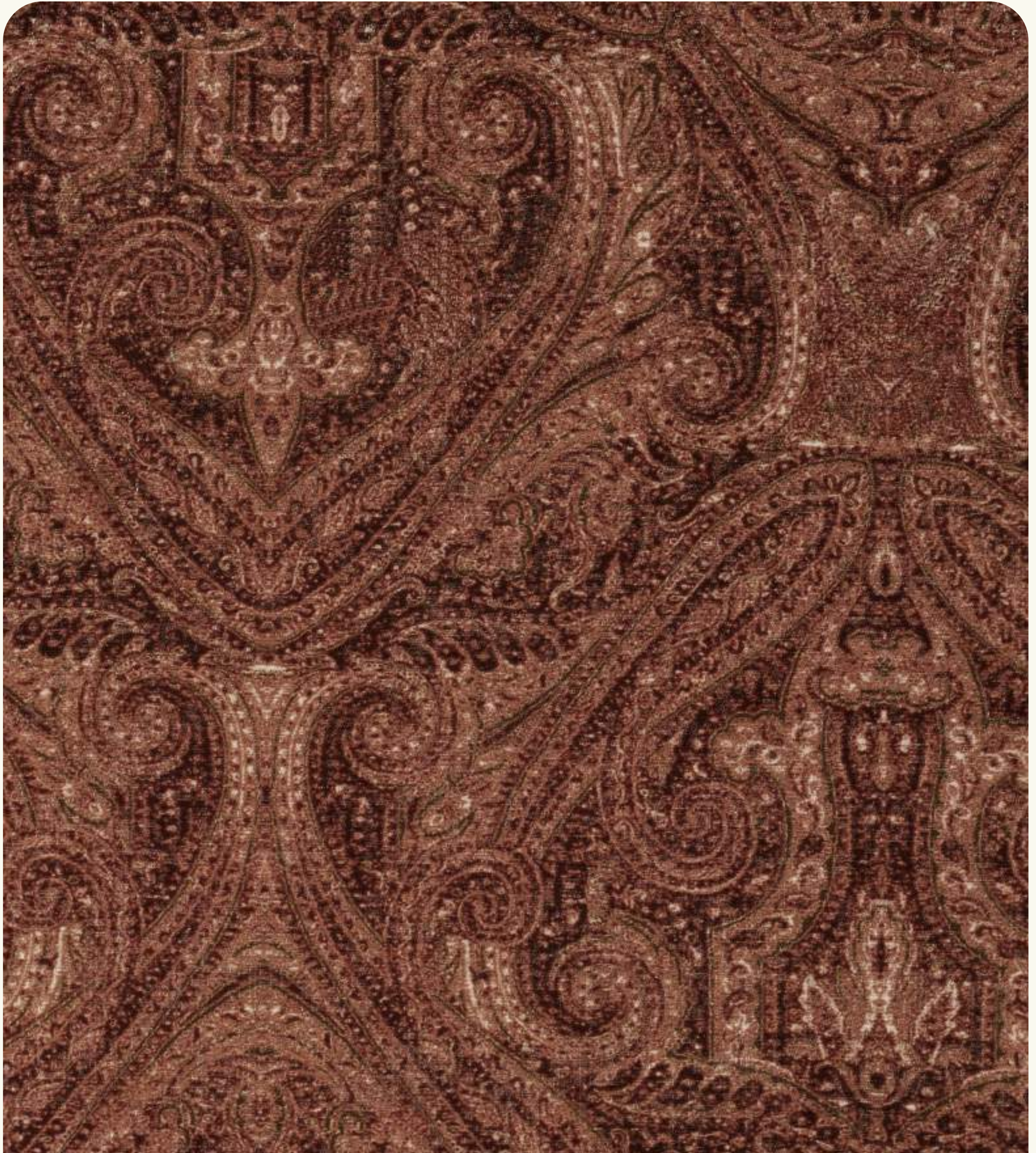


BUTA | GULABI | STK - 030

Width -140 cms | Composition - 43% Poly. 57% Vis. | Gsm - 276 | Martindale - N/A

H Repeat - 12 cms | V Repeat - 16 cms



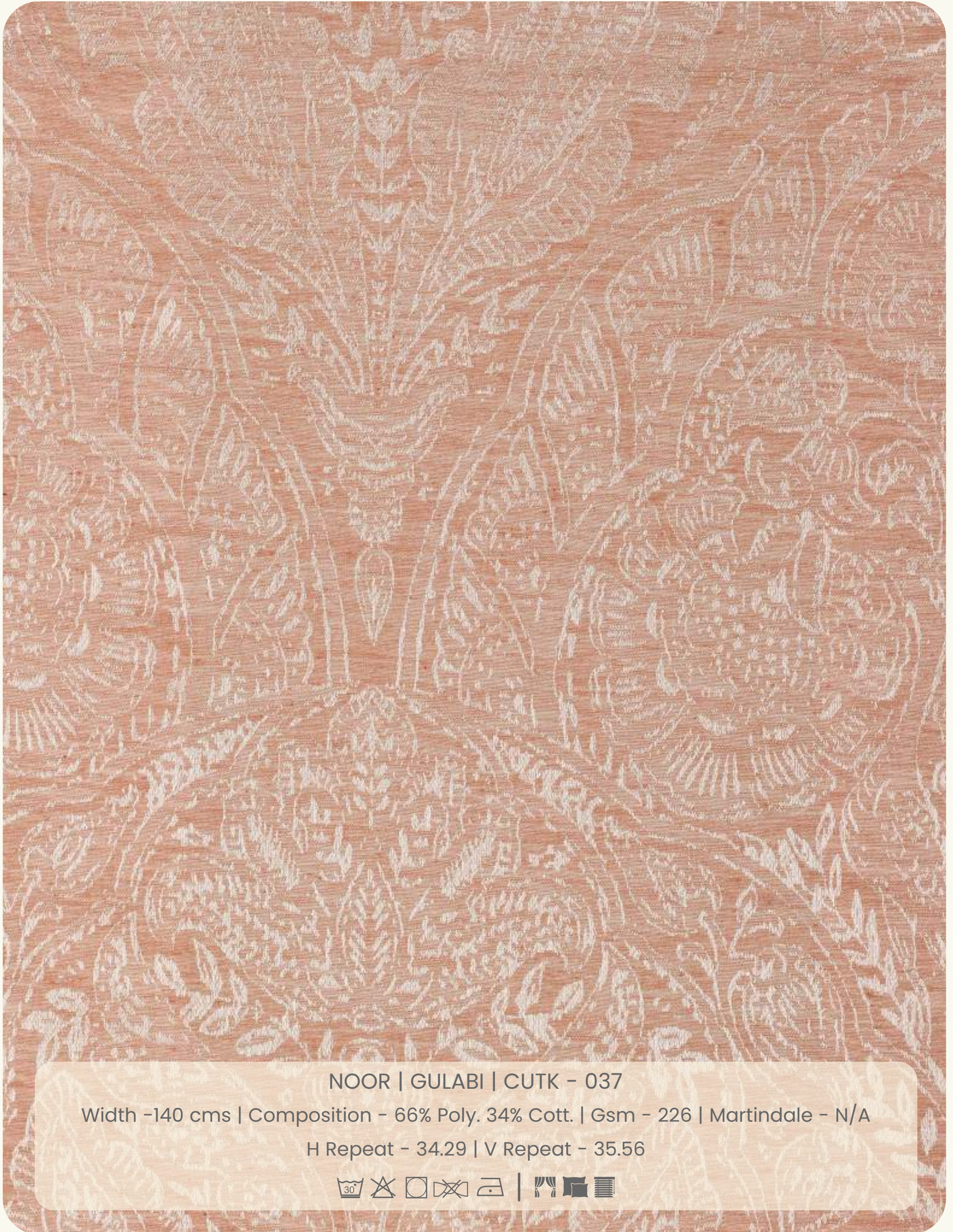


SHALIMAR | GULNAAR | CUTK - 015

Width -140 cms | Composition - 100% Poly. | Gsm - 344 | Martindale - 45000

H Repeat - 32.004 cms | V Repeat - 35.001 cms



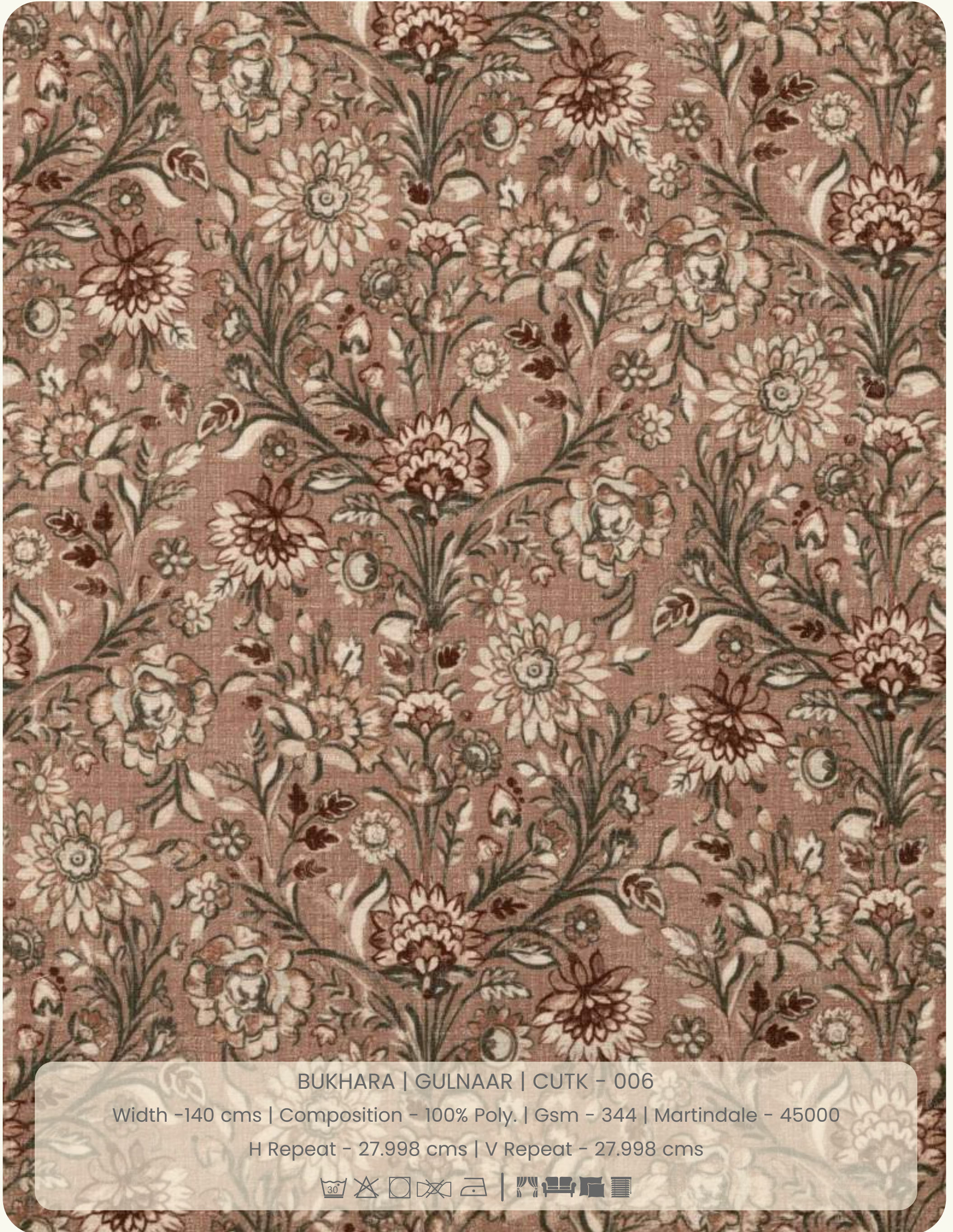


NOOR | GULABI | CUTK - 037

Width -140 cms | Composition - 66% Poly. 34% Cott. | Gsm - 226 | Martindale - N/A

H Repeat - 34.29 | V Repeat - 35.56





BUKHARA | GULNAAR | CUTK - 006

Width -140 cms | Composition - 100% Poly. | Gsm - 344 | Martindale - 45000

H Repeat - 27.998 cms | V Repeat - 27.998 cms





BUTA | BASANT | STK - 031

Width -140 cms | Composition - 43% Poly. 57% Vis. | Gsm - 276 | Martindale - N/A

H Repeat - 12 cms | V Repeat - 16 cms

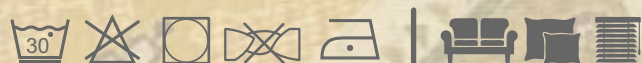


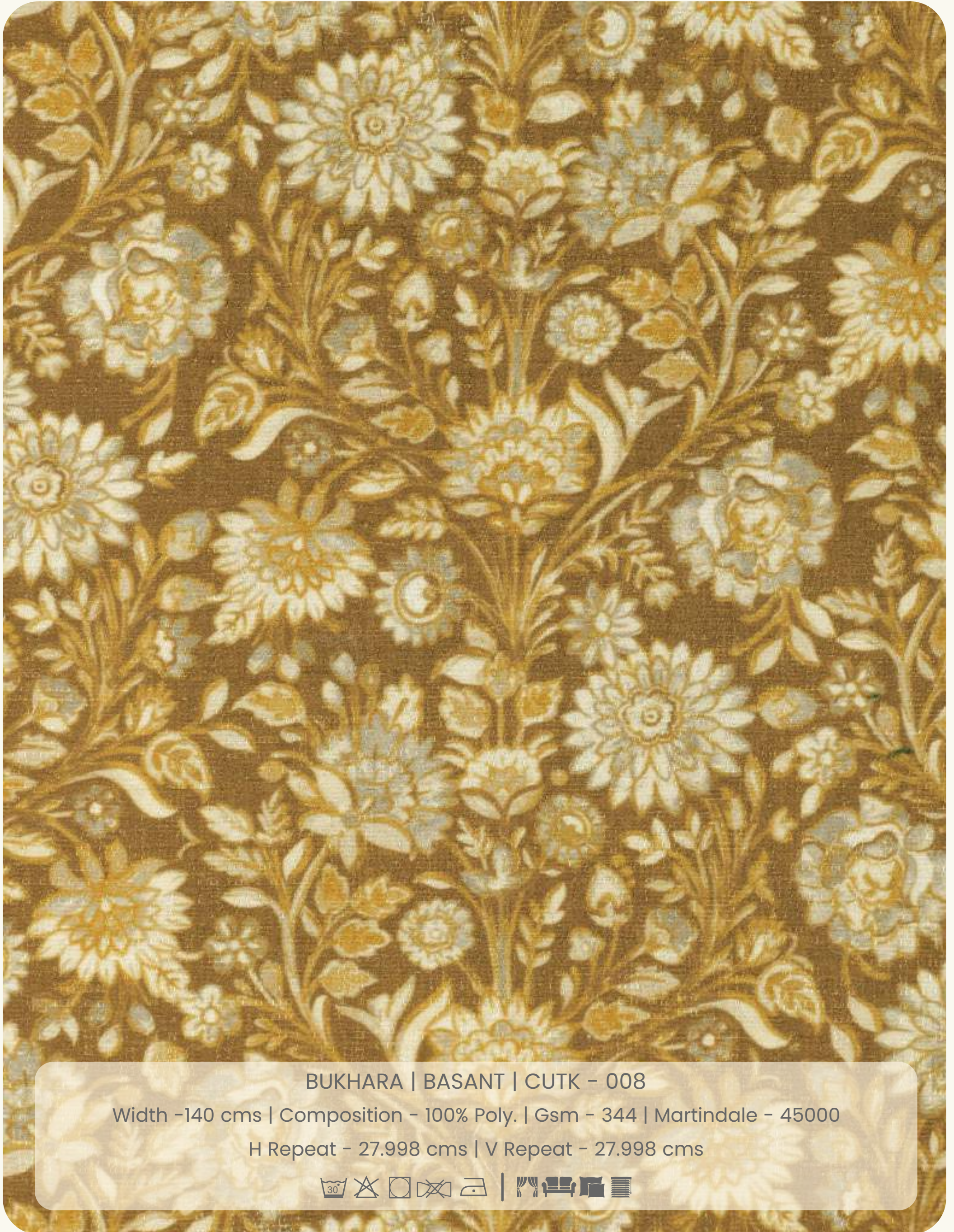


GULISTAN | BASANT | UTK - 022

Width -140 cms | Composition - 100% Poly. | Gsm - 355 | Martindale - 45000

H Repeat - 46.584 cms | V Repeat - 46.584 cms





BUKHARA | BASANT | CUTK - 008

Width -140 cms | Composition - 100% Poly. | Gsm - 344 | Martindale - 45000

H Repeat - 27.998 cms | V Repeat - 27.998 cms

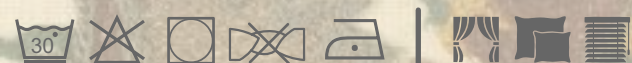


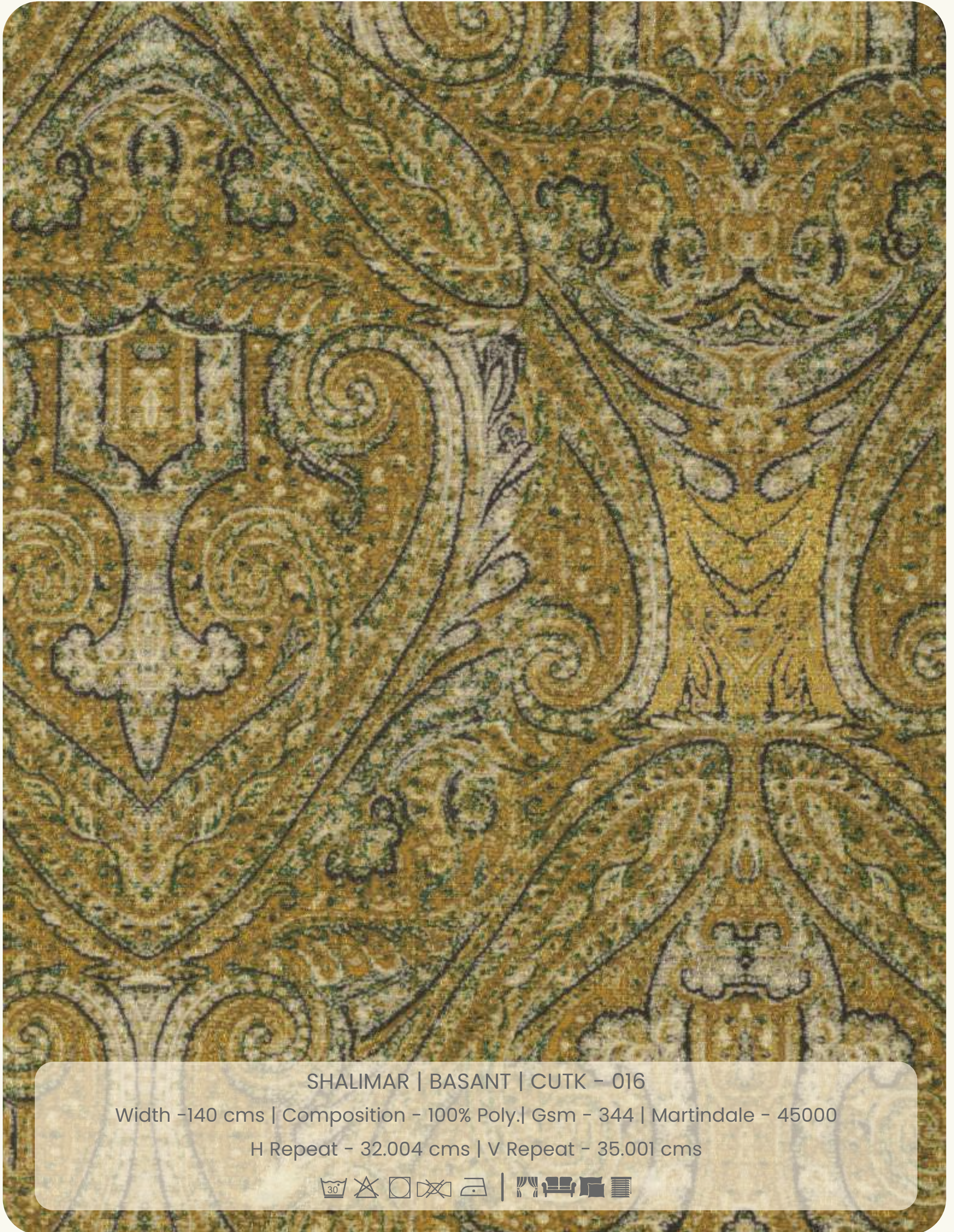


GULZAR | BAHAR | CUTK - 025

Width -140 cms | Composition - 73% Poly. 20% Cott. 7% Lin | Gsm - 320

Martindale - N/A | H Repeat - 25 cms | V Repeat - 43 cms



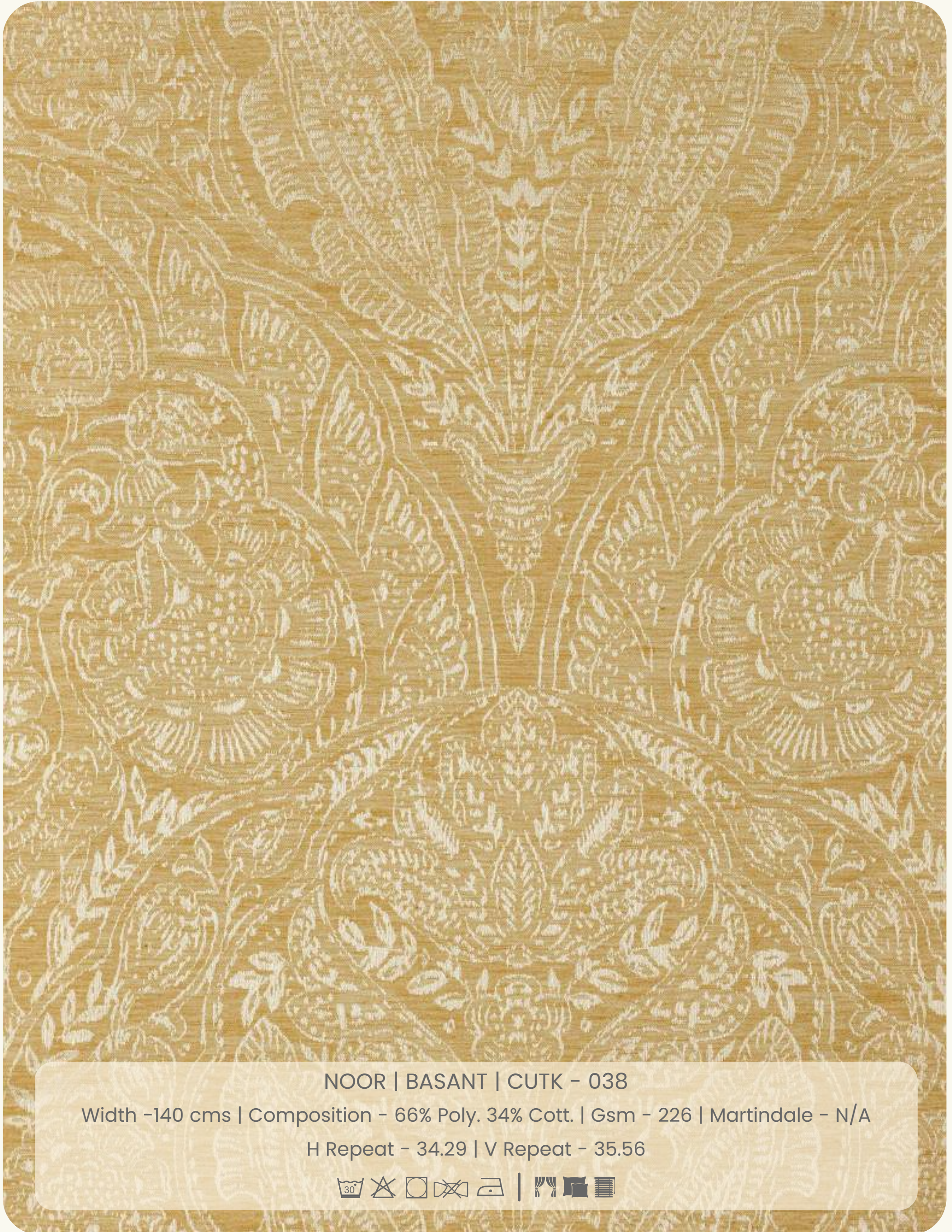


SHALIMAR | BASANT | CUTK - 016

Width -140 cms | Composition - 100% Poly. | Gsm - 344 | Martindale - 45000

H Repeat - 32.004 cms | V Repeat - 35.001 cms

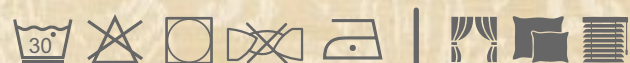




NOOR | BASANT | CUTK - 038

Width -140 cms | Composition - 66% Poly. 34% Cott. | Gsm - 226 | Martindale - N/A

H Repeat - 34.29 | V Repeat - 35.56





BUTA | SUNEHRI | STK - 032

Width -140 cms | Composition - 43% Poly. 57% Vis. | Gsm - 276 | Martindale - N/A

H Repeat - 12 cms | V Repeat - 16 cms

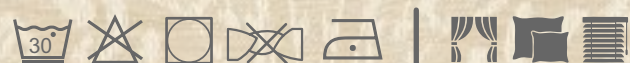




NOOR | MOOSI | CUTK - 039

Width -140 cms | Composition - 66% Poly. 34% Cott. | Gsm - 226 | Martindale - N/A

H Repeat - 34.29 | V Repeat - 35.56

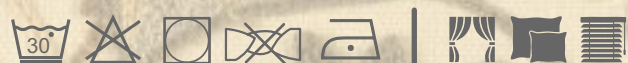




GULZAR | SUNEHRI | CUTK - 026

Width -140 cms | Composition - 73% Poly. 20% Cott. 7% Lin | Gsm - 320

Martindale - N/A | H Repeat - 25 cms | V Repeat - 43 cms





BUKHARA | SANG | CUTK - 005

Width -140 cms | Composition - 100% Poly. | Gsm - 344 | Martindale - 45000

H Repeat - 27.998 cms | V Repeat - 27.998 cms





GULISTAN | SUNEHRI | UTK - 020

Width -140 cms | Composition - 100% Poly. | Gsm - 355 | Martindale - 45000

H Repeat - 46.584 cms | V Repeat - 46.584 cms

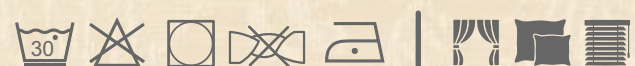


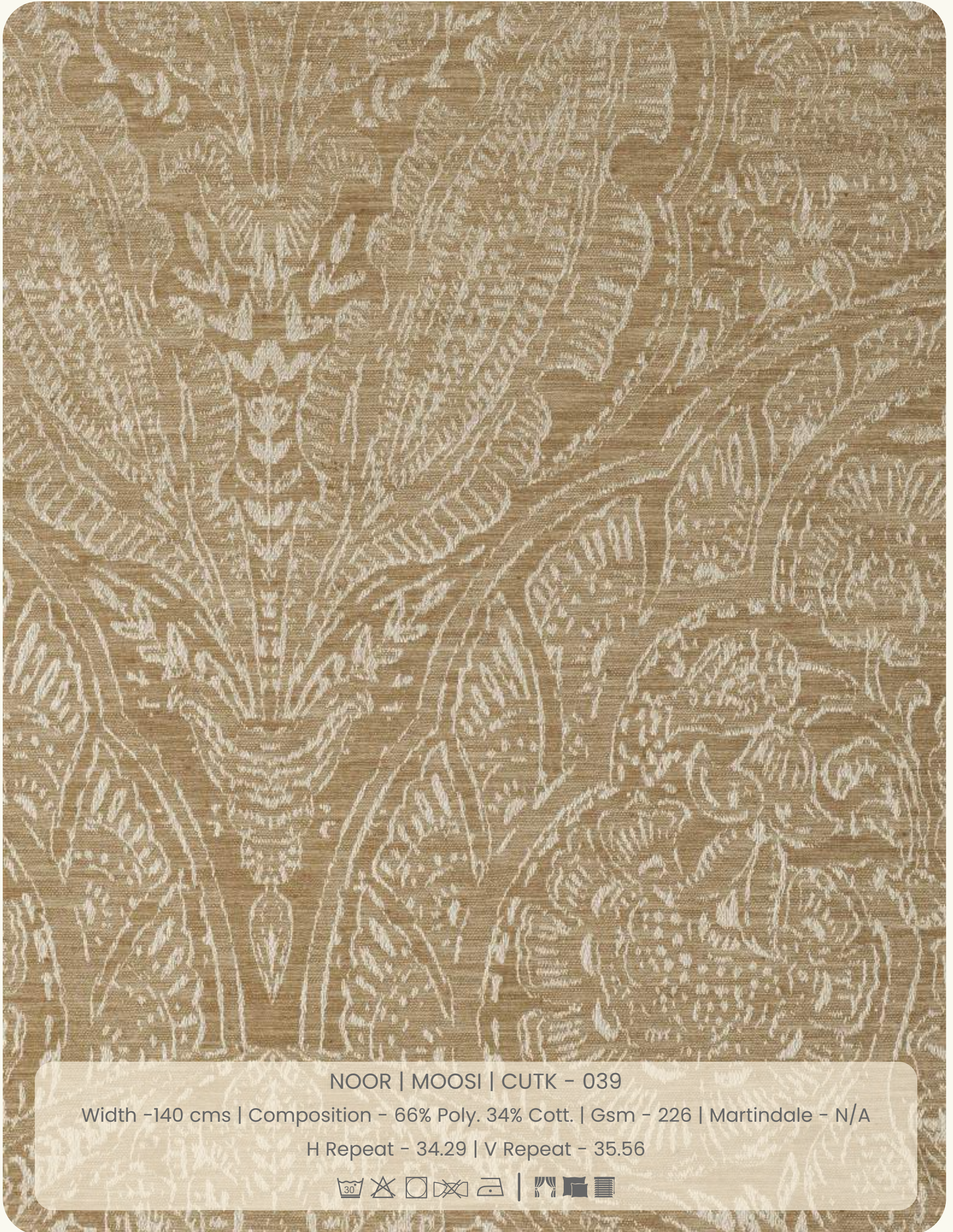


NOOR | MOTI | CUTK - 040

Width -140 cms | Composition - 66% Poly. 34% Cott. | Gsm - 226 | Martindale - N/A

H Repeat - 34.29 | V Repeat - 35.56

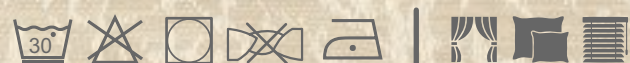




NOOR | MOOSI | CUTK - 039

Width -140 cms | Composition - 66% Poly. 34% Cott. | Gsm - 226 | Martindale - N/A

H Repeat - 34.29 | V Repeat - 35.56





SHALIMAR | MULTANI | CUTK - 009

Width -140 cms | Composition - 100% Poly. | Gsm - 344 | Martindale - 45000

H Repeat - 32.004 cms | V Repeat - 35.001 cms

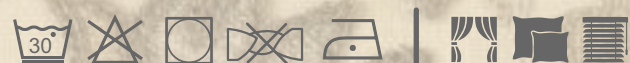




GULZAR | MULTANI | CUTK - 027

Width -140 cms | Composition - 73% Poly. 20% Cott. 7% Lin | Gsm - 320

Martindale - N/A | H Repeat - 25 cms | V Repeat - 43 cms





BUKHARA | MULTANI | CUTK - 001

Width -140 cms | Composition - 100% Poly. | Gsm - 344 | Martindale - 45000

H Repeat - 27.998 cms | V Repeat - 27.998 cms



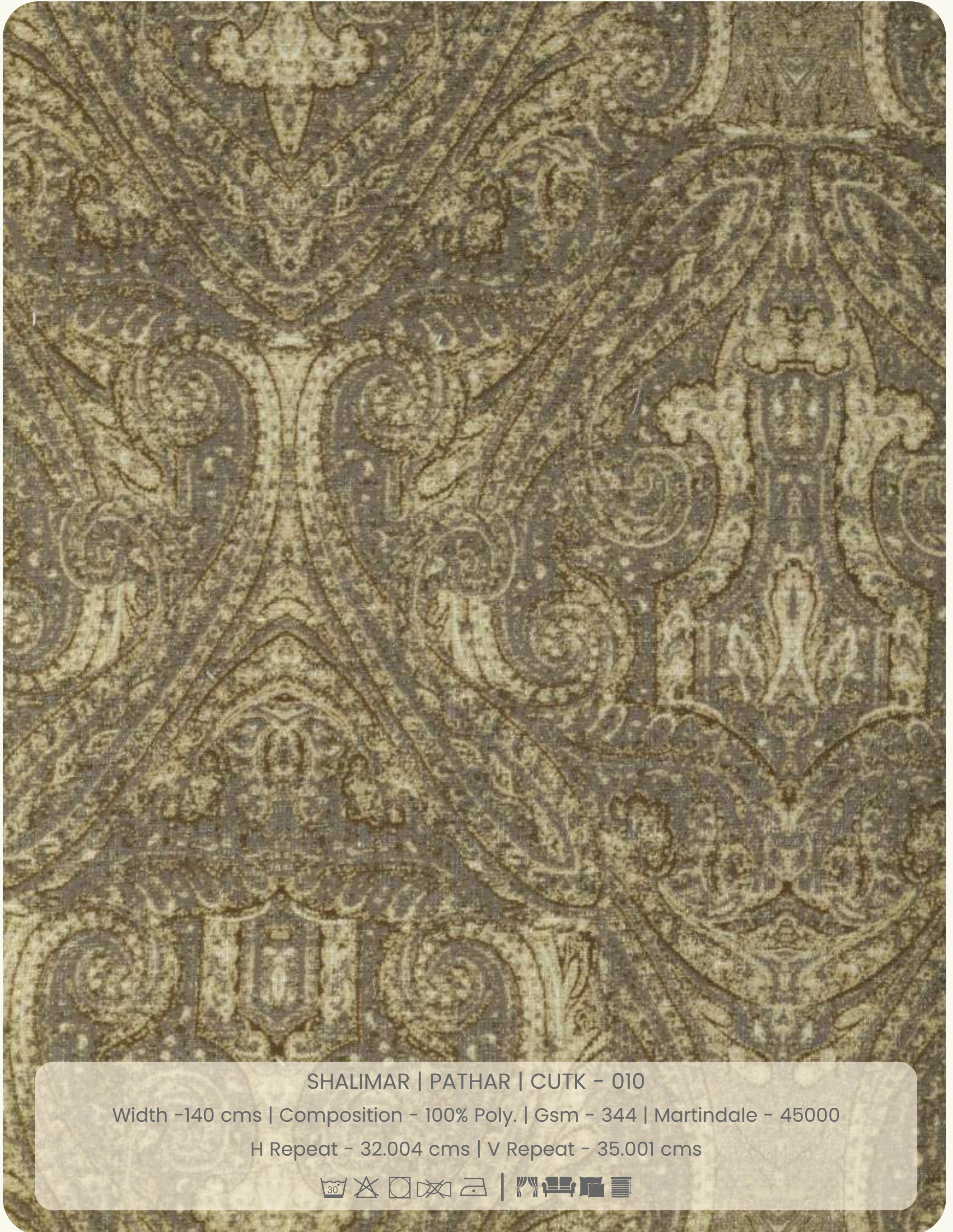


BUTA | MULTANI | STK - 033

Width -140 cms | Composition - 43% Poly. 57% Vis. | Gsm - 276 | Martindale - N/A

H Repeat - 12 cms | V Repeat - 16 cms





SHALIMAR | PATHAR | CUTK - 010

Width -140 cms | Composition - 100% Poly. | Gsm - 344 | Martindale - 45000

H Repeat - 32.004 cms | V Repeat - 35.001 cms



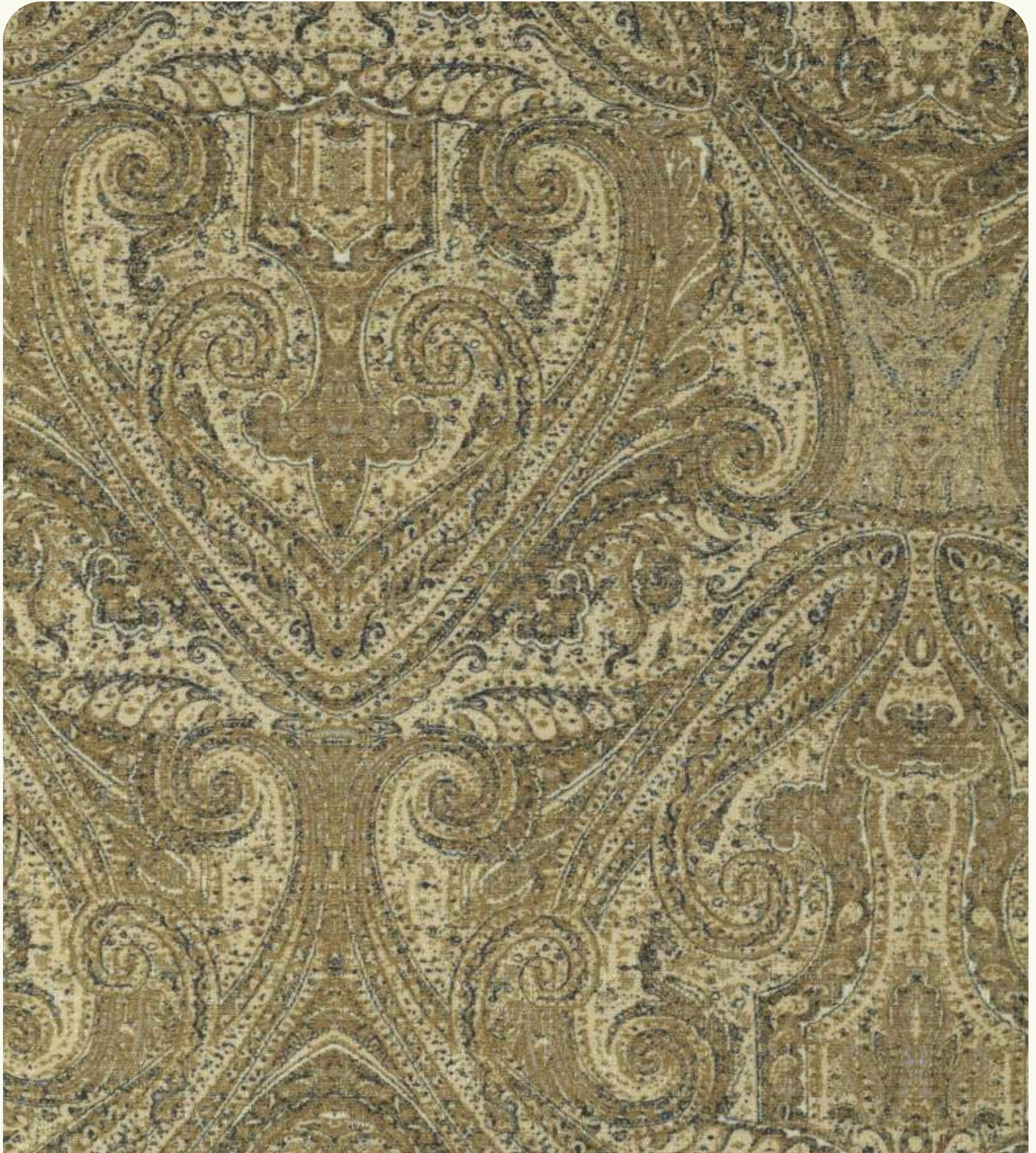


GULZAR | PATHAR | CUTK - 028

Width -140 cms | Composition - 73% Poly. 20% Cott. 7% Lin | Gsm - 320

Martindale - N/A | H Repeat - 25 cms | V Repeat - 43 cms



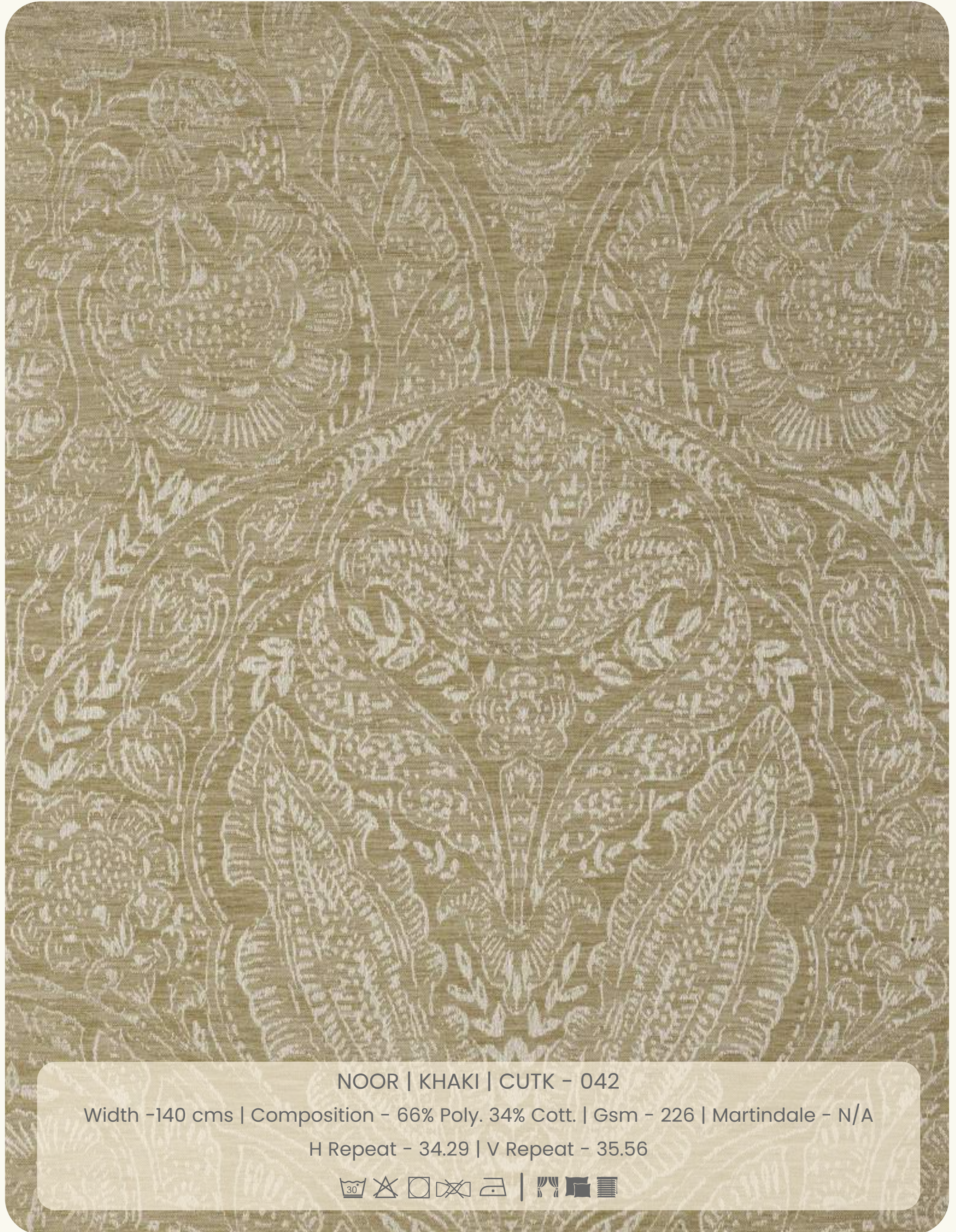


SHALIMAR | KHUSHK | CUTK - 011

Width -140 cms | Composition - 100% Poly. | Gsm - 344 | Martindale - 45000

H Repeat - 32.004 cms | V Repeat - 35.001 cms





NOOR | KHAKI | CUTK - 042

Width -140 cms | Composition - 66% Poly. 34% Cott. | Gsm - 226 | Martindale - N/A

H Repeat - 34.29 | V Repeat - 35.56





BUTA | KHUSHK | STK - 034

Width -140 cms | Composition - 43% Poly. 57% Vis. | Gsm - 276 | Martindale - N/A

H Repeat - 12 cms | V Repeat - 16 cms





BUKHARA | KHAKI | CUTK - 002

Width -140 cms | Composition - 100% Poly. | Gsm - 344 | Martindale - 45000

H Repeat - 27.998 cms | V Repeat - 27.998 cms



Fabrex[®]
Furnishings by EXCEL



threads of kashmir



www.excelwallpapers.com